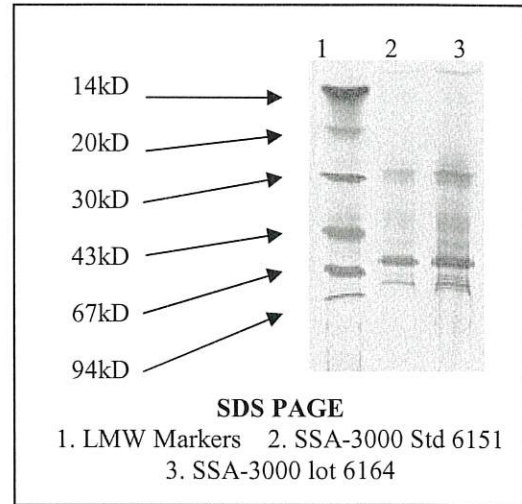


Certificate of Analysis

Product: SSA-3000
Lot Number: 6164
Appearance: Frozen clear liquid
Expiration Date: 07/Nov/2023
Material of Origin: Bovine Spleen from USA origin



Parameter	Specification	Result
Protein Concentration by BCA	0.048-0.448 mg/ml	0.158 mg/ml
Antigen titer by direct coat ELISA		
Vs Positive antibody 1	75-125%	103%
Vs Positive antibody 2	75-125%	102%
Vs Positive antibody 3	75-125%	122%
Mean	80-120%	109%
Noise/Signal ratio by direct coat ELISA		
Vs Normal serum	<0.139	0.003
Vs SSB antibody	<1.624	0.246
Vs SCL-70 antibody	<0.201	0.056
Vs Sm antibody	<0.130	-0.002
Vs Sm-RNP Complex antibody	<0.156	0.007
Vs Mitochondrial antibody	<0.157	0.004
Vs Jo-1 antibody	<0.176	0.010

Double Immunodiffusion Results:

	Standard	Lot 6151
Titer vs specific antibody	1:2	1:2
Reaction with anti-host serum proteins	Negative	Negative

Absorbance at 280nm: 0.401 at 1: 1 dilution

[Signature]

Quality Director

6/6/2018
Date