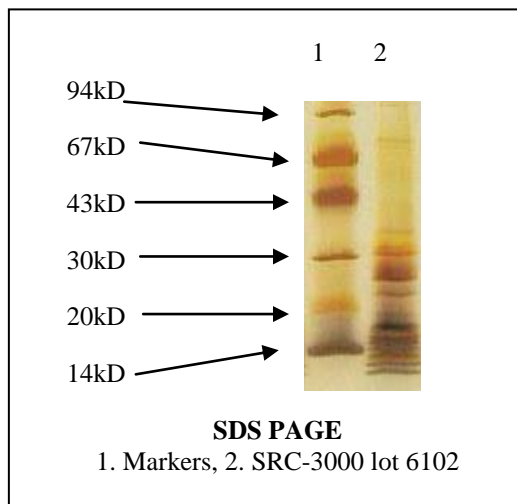


# Certificate of Analysis

**Product:** SRC-3000  
**Lot Number:** 6102  
**Appearance:** Frozen clear liquid  
**Expiration Date:** 01/August/2020  
**Material of Origin:** Bovine Thymus  
 From USA origin



Parameter	Specification	Result
Protein Concentration by BCA	0.028-0.957 mg/ml	0.305 mg/ml
Antigen titer by direct coat ELISA		
Vs Positive antibody 1	75-125%	195%
Vs Positive antibody 2	75-125%	172%
Vs Positive antibody 3	75-125%	211%
Mean	80-120%	193%
Noise/Signal ratio by direct coat ELISA		
Vs Normal serum	<0.01	-0.002
Vs SSA antibody	<0.06	0.002
Vs SSB antibody	<0.01	-0.004
Vs SCL-70 antibody	<0.01	0.004
Vs Sm antibody	<1.2	0.89
Vs Jo-1 antibody	<0.05	0.007
Vs Mitochondrial antibody	<0.01	0.004

**Double Immunodiffusion Results:**

	Standard	Lot 6102
Titer vs specific antibody	1:1	1:2
Reaction with anti-host serum proteins	Negative	Negative

**Absorbance at 280nm:** 0.190 at 1: 11 dilution  
 This product meets or surpasses ImmunoVision specifications.

*Thomas Smith*

Quality Control Director

9/15/2017  
 Date