

Certificate of Analysis

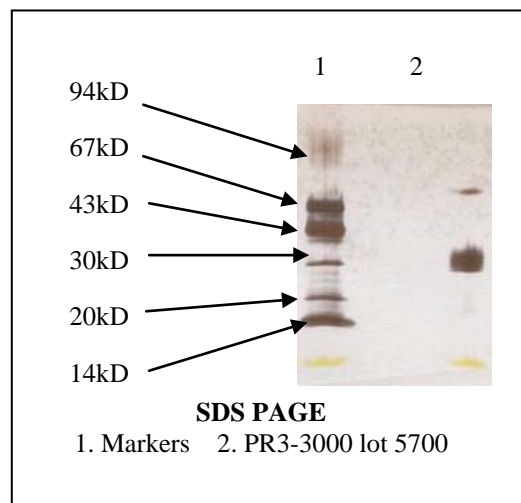
Product: PR3-3000, PR3-3100

Lot Number: 5700

Appearance: Frozen liquid

Expiration Date: 01/July/2020

Material of Origin: Human Promyelocytic cell line



Parameter	Specification	Result
Protein Conc. (A_{280})	0.3 to 0.8 mg/ml	0.64 mg/ml
Antigen titer by capture ELISA	50 to 200 % of standard	145 %
Antigen titer by direct coat ELISA		
Overall	>80% of standard	120%
Vs Positive Antibody 1	>75 % of standard	153 %
Vs Positive Antibody 2	>75 % of standard	100 %
Vs Positive Antibody 3	>75 % of standard	107 %
Noise/Signal ratio by direct coat ELISA		
Vs Normal serum	<0.071	0.014
Vs MPO antibody	<0.034	0.000
Vs DNA antibody	<0.019	0.007
Vs SSA antibody	<0.029	0.019
Vs SSB Complex antibody	<0.039	0.009
Vs SCL-70 antibody	<0.031	0.002
Vs Smith antibody	<0.048	0.013
Vs Sm/RNP antibody	<0.029	0.016
Vs Jo-1 antibody	<0.029	0.019

This product meets or surpasses ImmunoVision specifications.

TL ml

Quality Control Director

11/7/2013
Date