

Certificate of Analysis

Product: HIS-1000 and HIS-1010

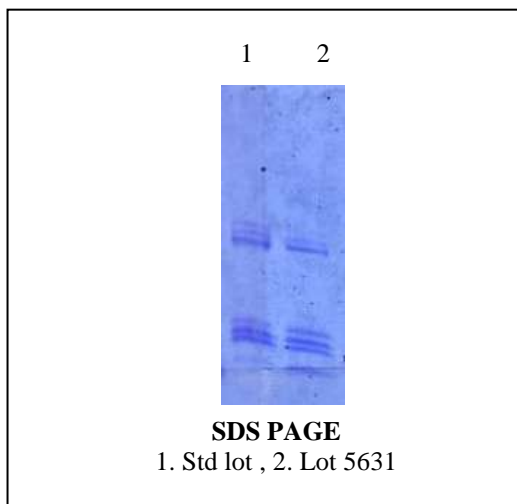
Lot Number: 5631

Appearance: Dry white powder

ELISA Absorbances:

Antibody	Standard	Lot 5631
Positive 1	1.849	1.851
Positive 2	1.075	1.141
Positive 3	1.058	0.985
Negative 1	0.073	0.140

SDS-Page results:



Material of Origin: Chicken red blood cells from USA origin

This product meets or surpasses ImmunoVision specifications.

Quality Control Director

2/8/2013
Date